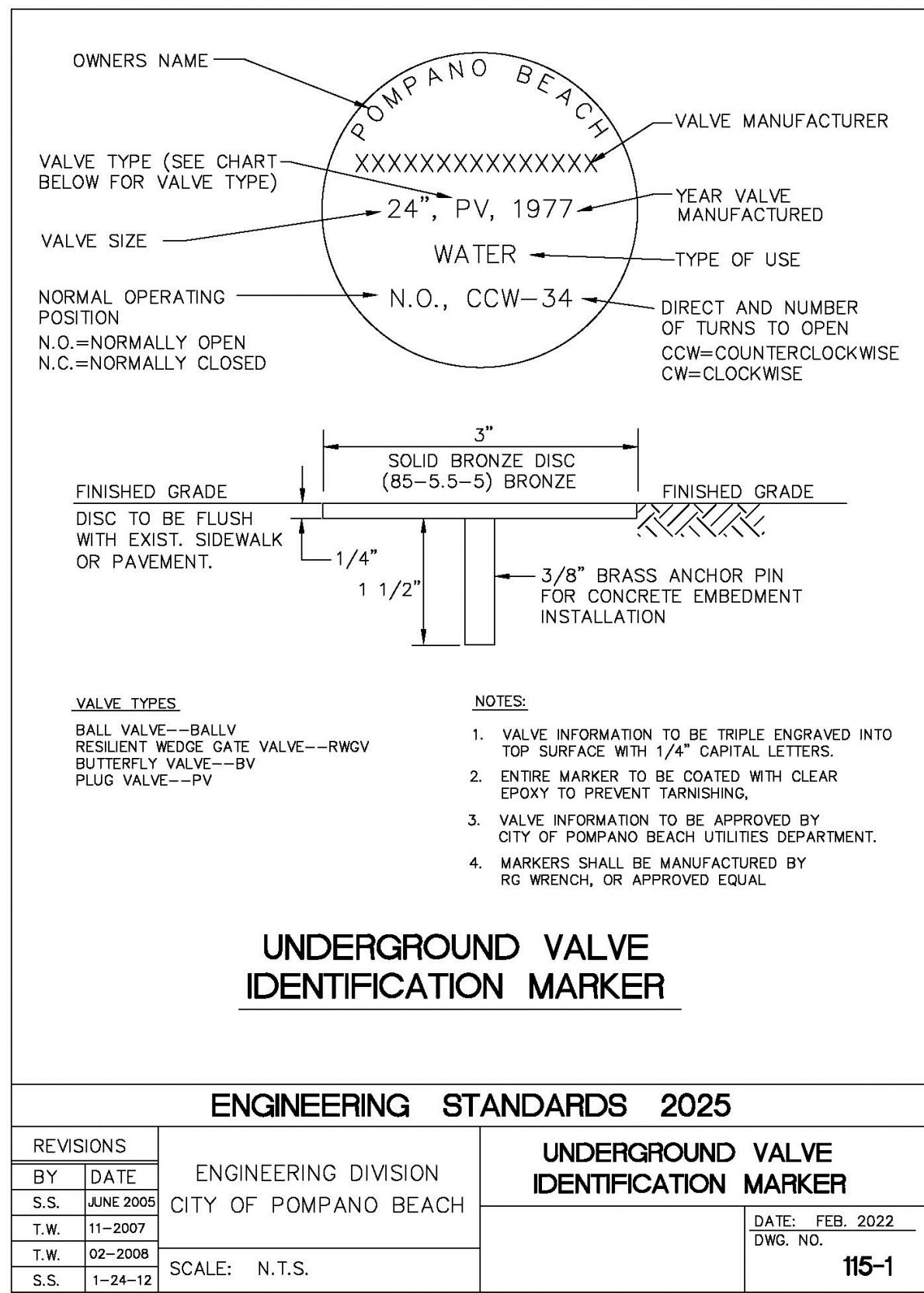
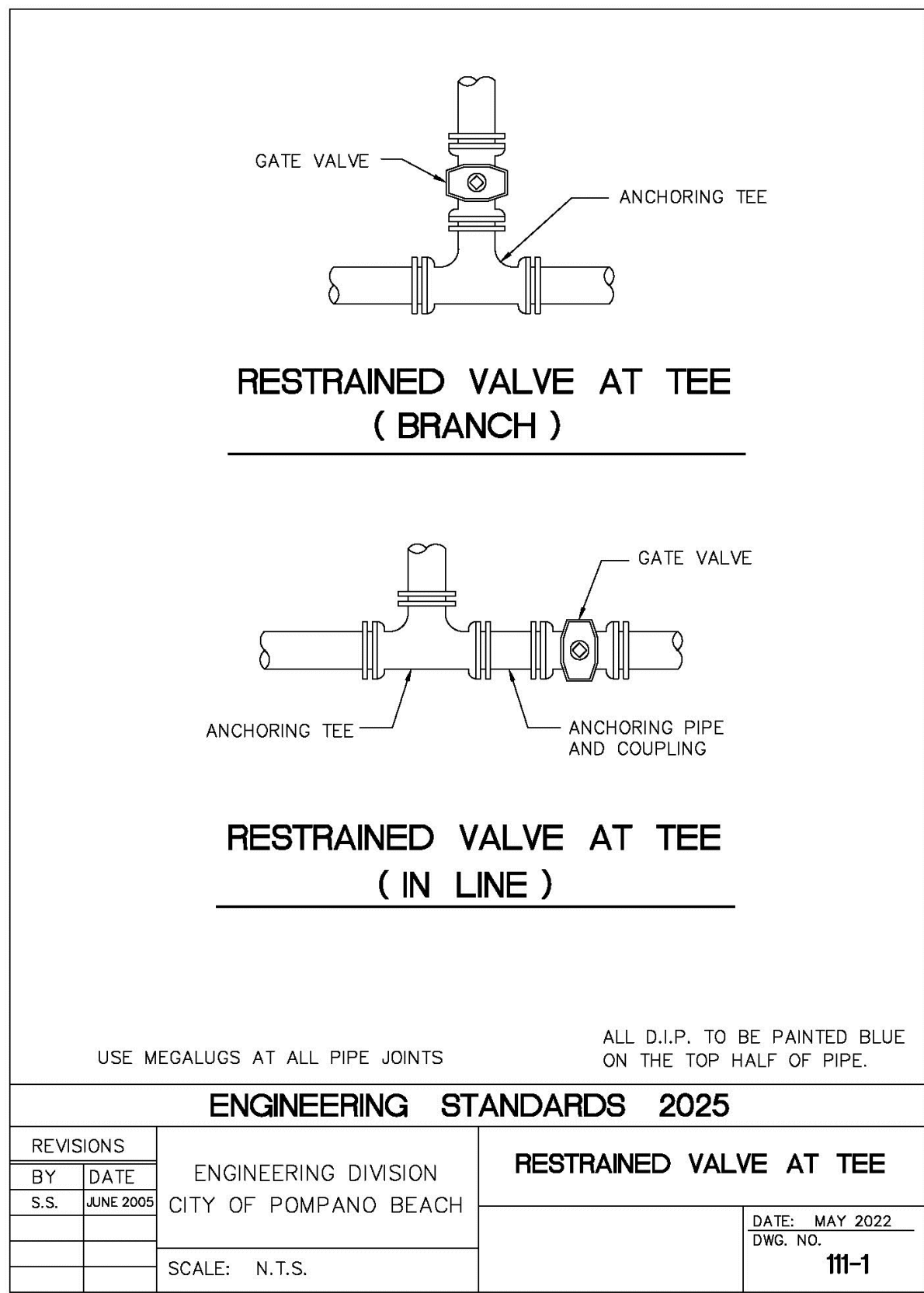
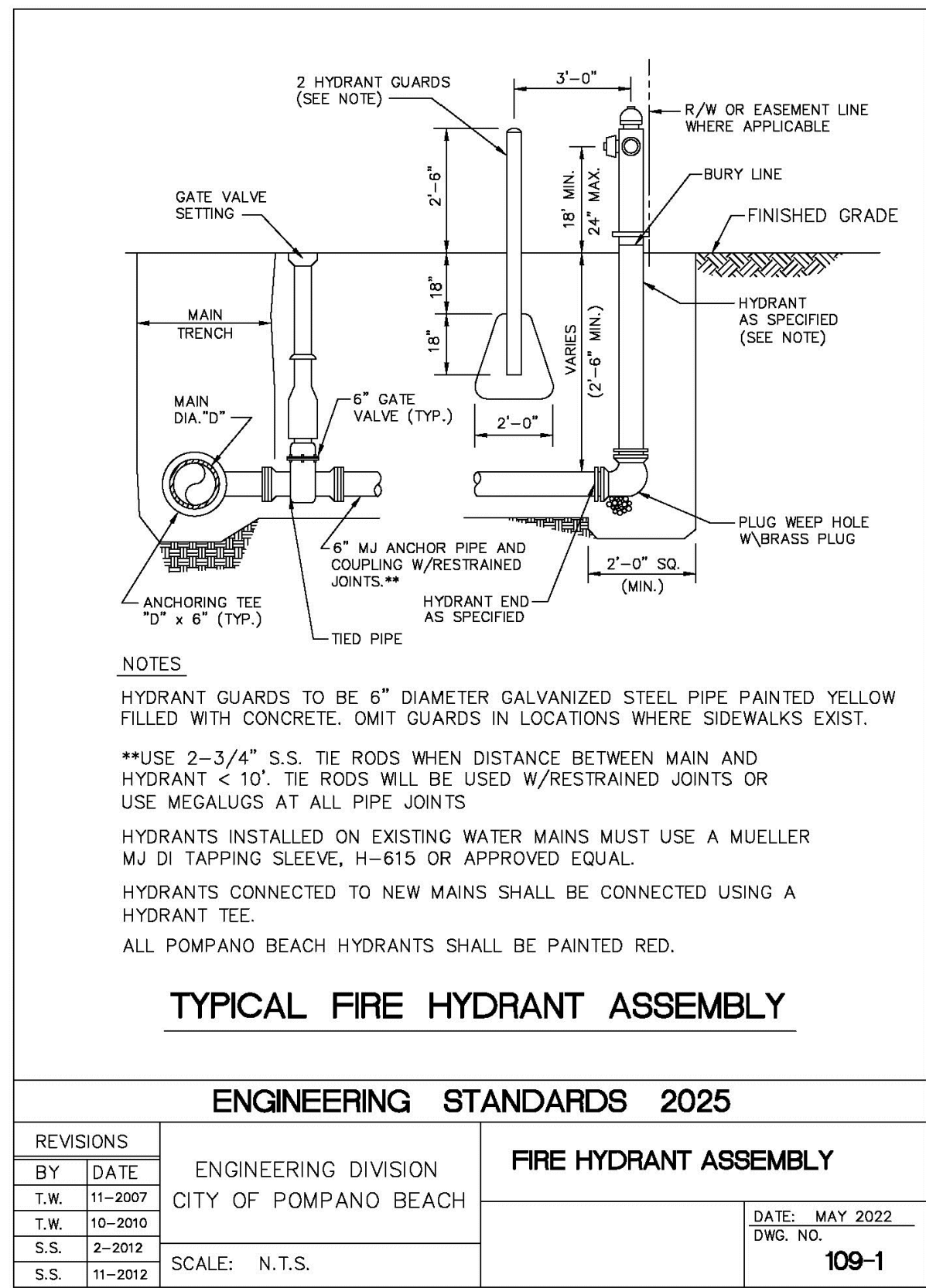
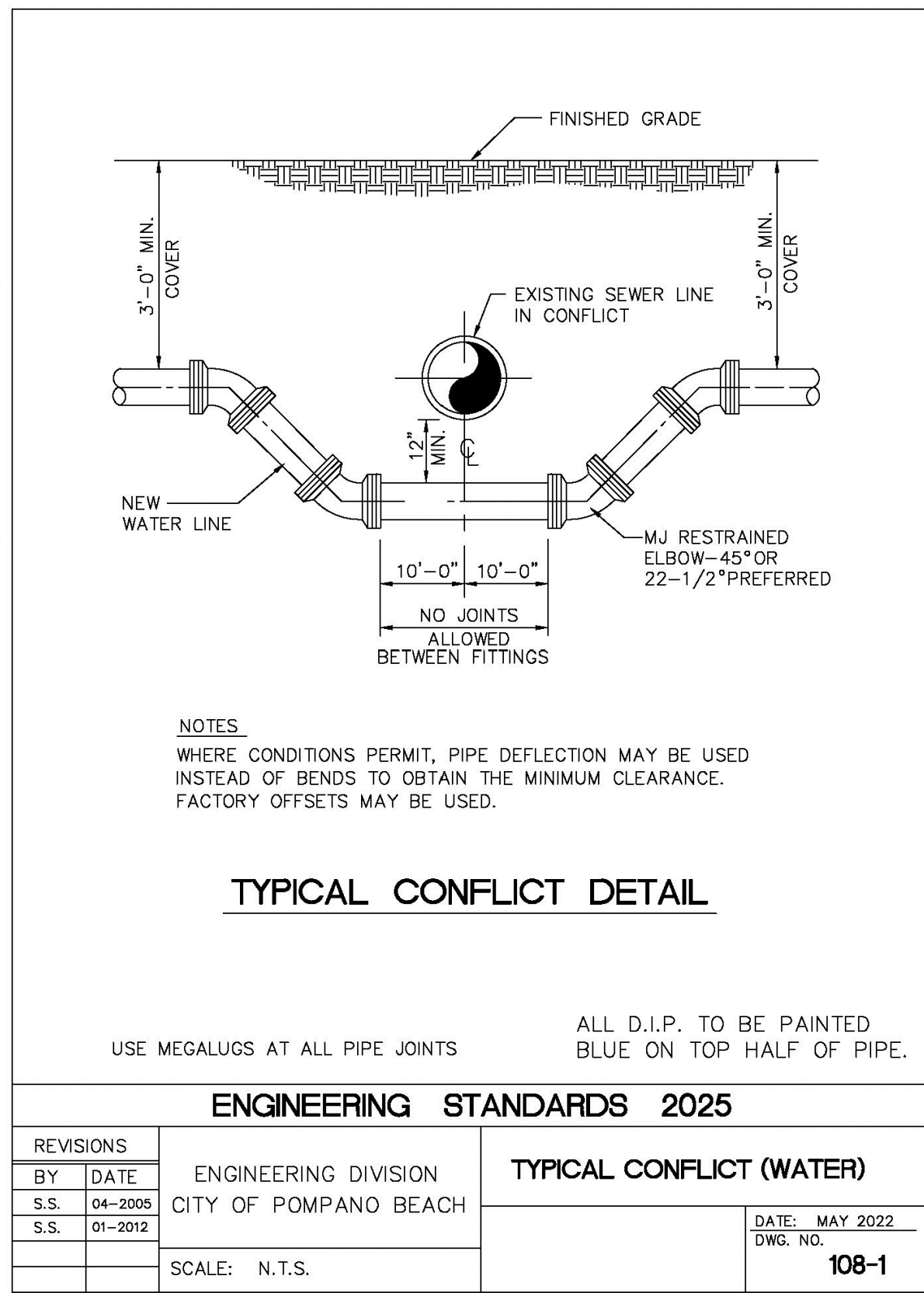
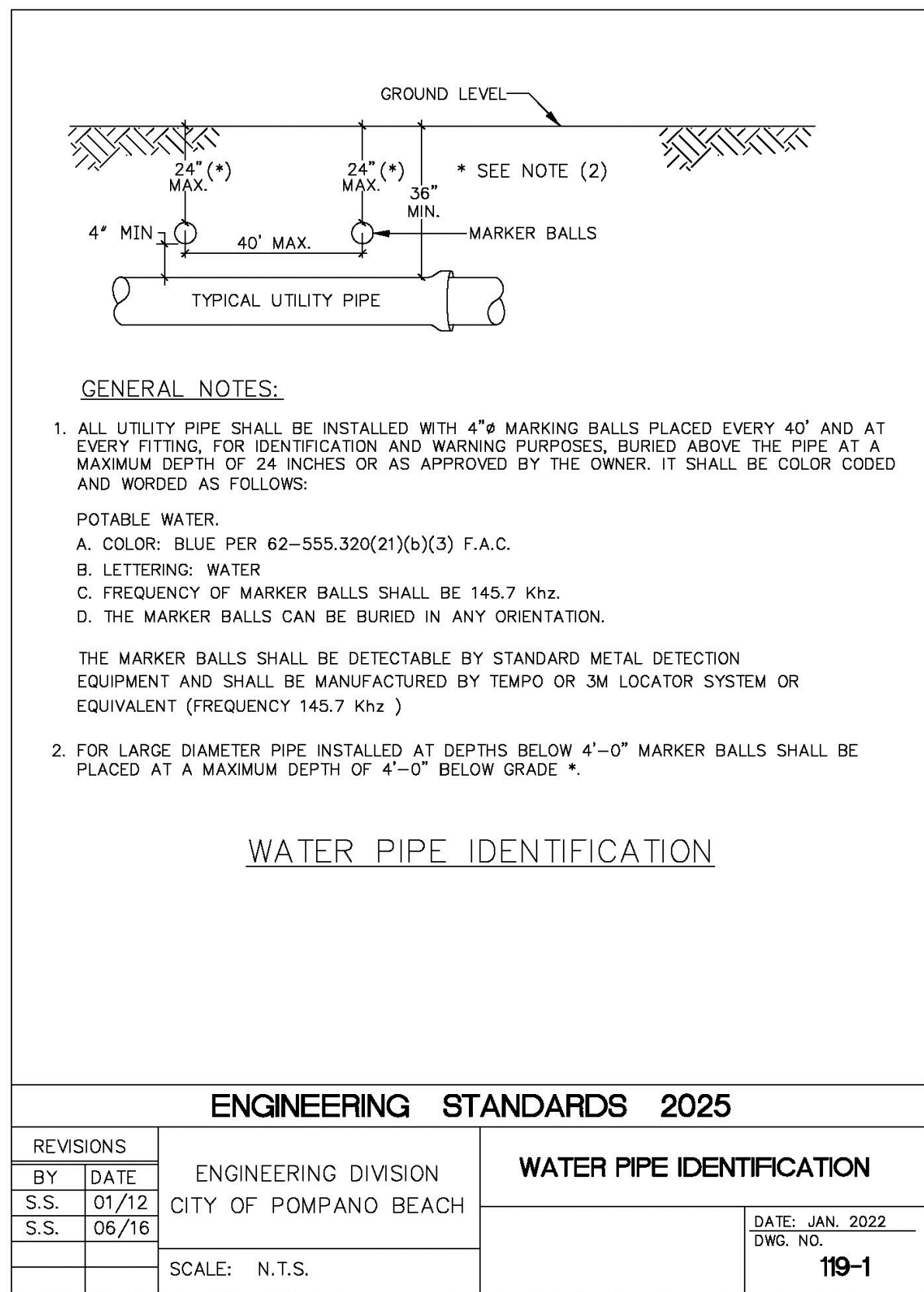
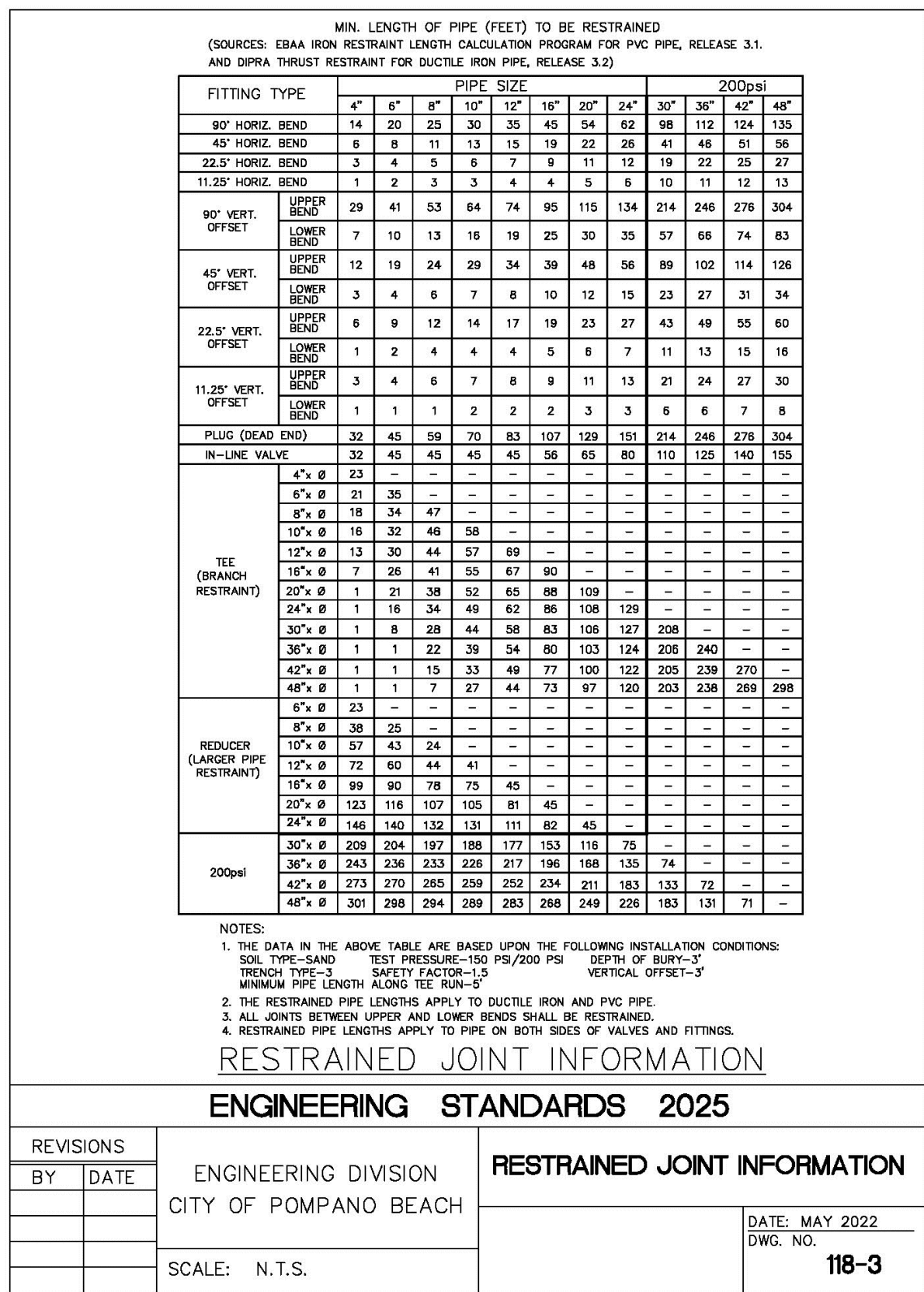
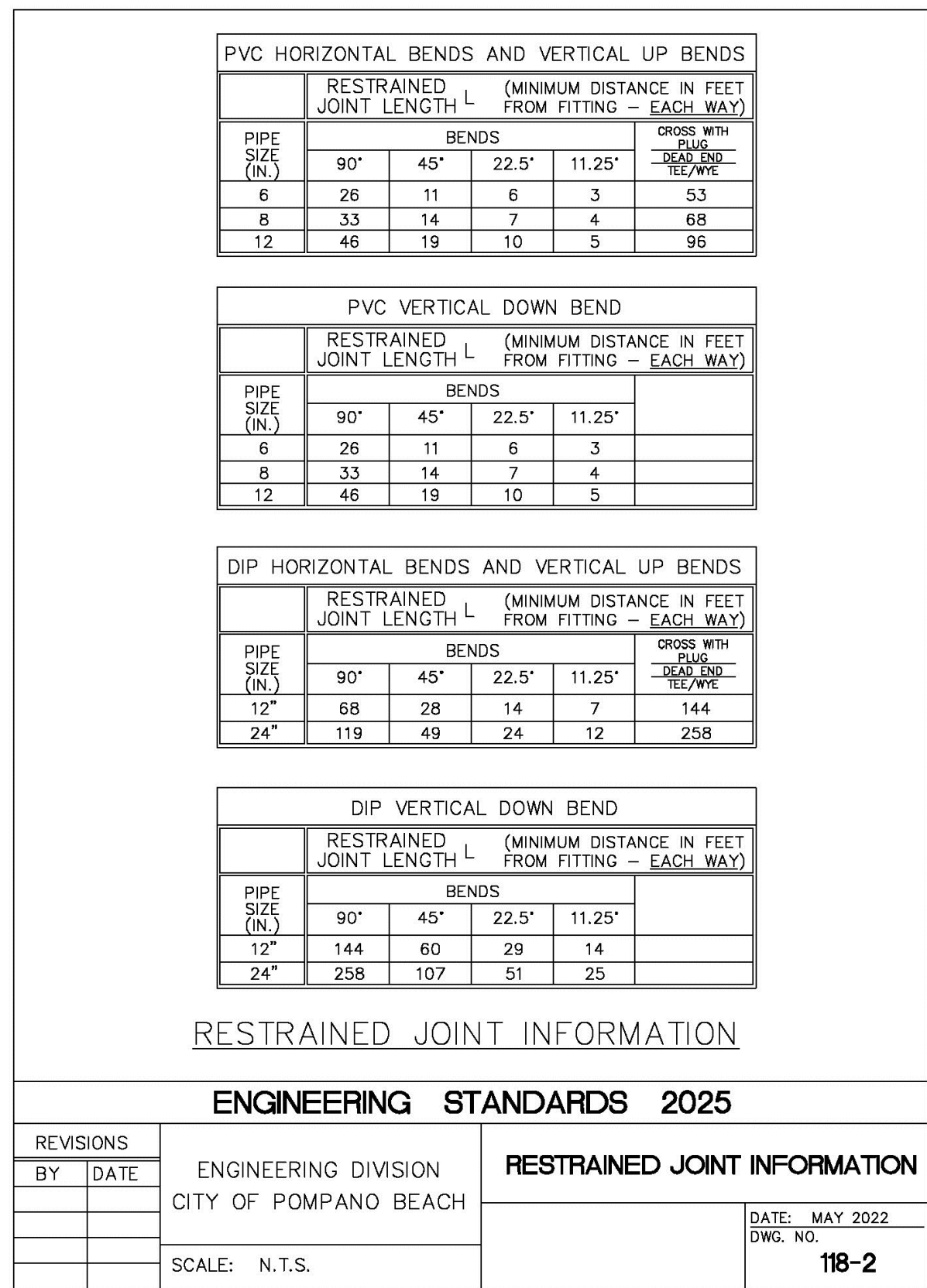
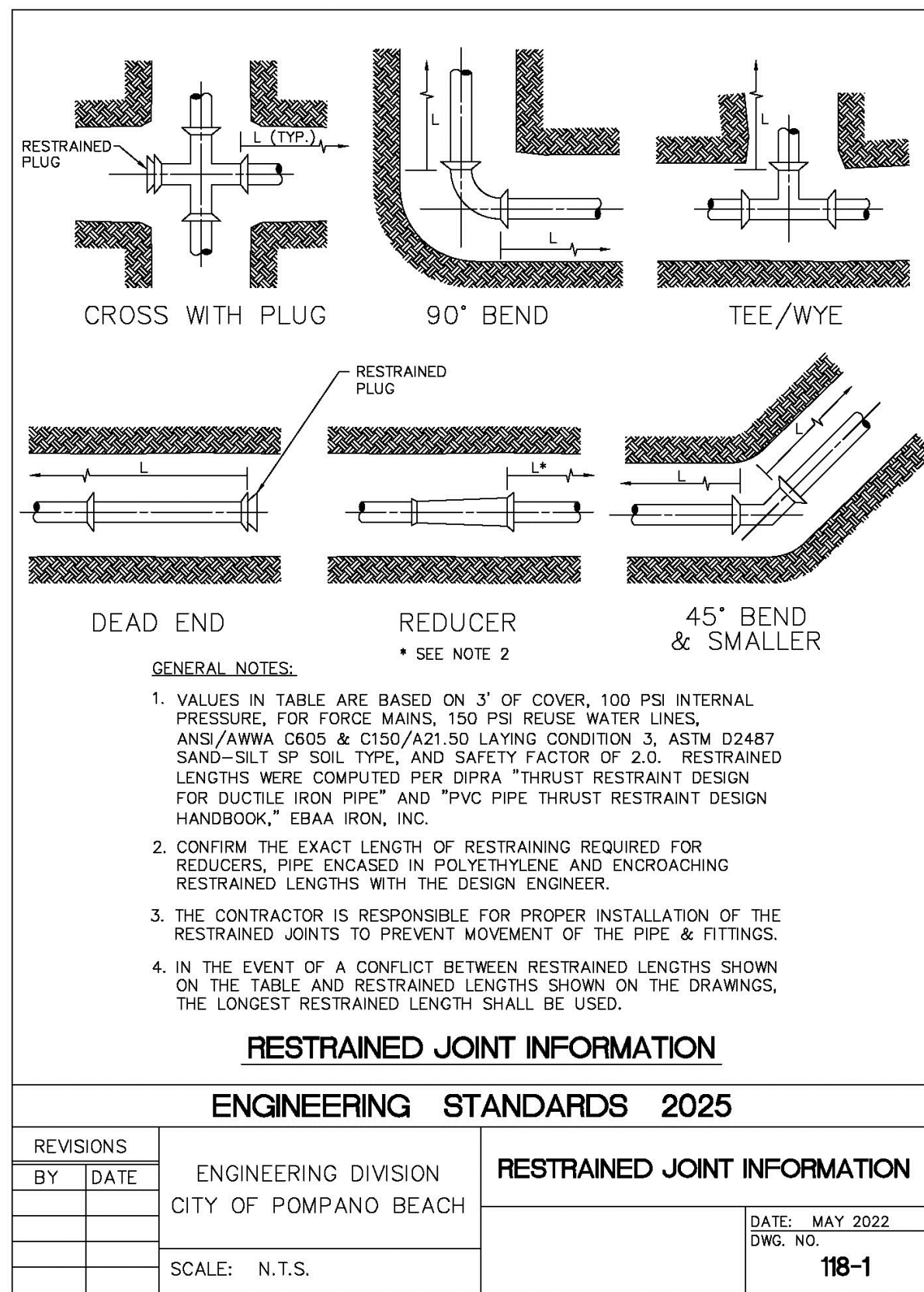


D

C



B



A

REVISIONS		
NO.	DESCRIPTION	DATE

**PRELIMINARY PLAN
NOT FOR CONSTRUCTION**
THESE PLANS ARE NOT FULLY PERMITTED AND ARE SUBJECT TO REVISIONS MADE DURING THE PERMITTING PROCESS.
RESPONSIBILITY FOR THE USE OF THESE PLANS PRIOR TO OBTAINING PERMITS FROM ALL AGENCIES HAVING JURISDICTION OVER THE PROJECT WILL FALL SOLELY UPON THE USER.

ISSUE DATE: 10/15/2025
DESIGNED BY: BB
DRAWN BY: JS
CHECKED BY: NW
BID-CONTRACT:

THOMAS F. DONAHUE, P.E.
FLORIDA REG. NO. 60529
(FOR THE FIRM)

CLIENT
FIRST INDUSTRIAL

PROJECT
FIRST 95 DISTRIBUTION CENTER- PHASE II
1000-1041 NW 12th Ter.
Pompano Beach, FL

SHEET TITLE
WATER AND SEWER DETAILS

SHEET NUMBER **CU-502**
PROJECT NUMBER **10607.14**